

Table of Contents	
1	Title
2	Block Diagram
3	MKW40Z MCU
4	OpenSDA INTERFACE
5	I/O Headers and Power Supply

Revisions & Change Log			
Rev	Description	Date	Approved
X1	Initial Draft	05/9/14	A. QUIROZ
X2	DCDC Jumper Sets FXOS8700CQ Accel RF Balun matching	05/19/14	A. QUIROZ
	BOM Optimization, Adding TP for Testing	05/23/14	A. QUIROZ
A	Prototype Release	07/08/14	A. QUIROZ
B	Update BOM, SPI Flash Memory	11/18/14	A. QUIROZ
B3	Update RF BOM, Adding DCDC capacitor	04/06/15	A. QUIROZ
C	Update headers and PokaYokes	7/30/15	

FREEDOM KW40Z BLE/Zigbee

- 5

4

3

2

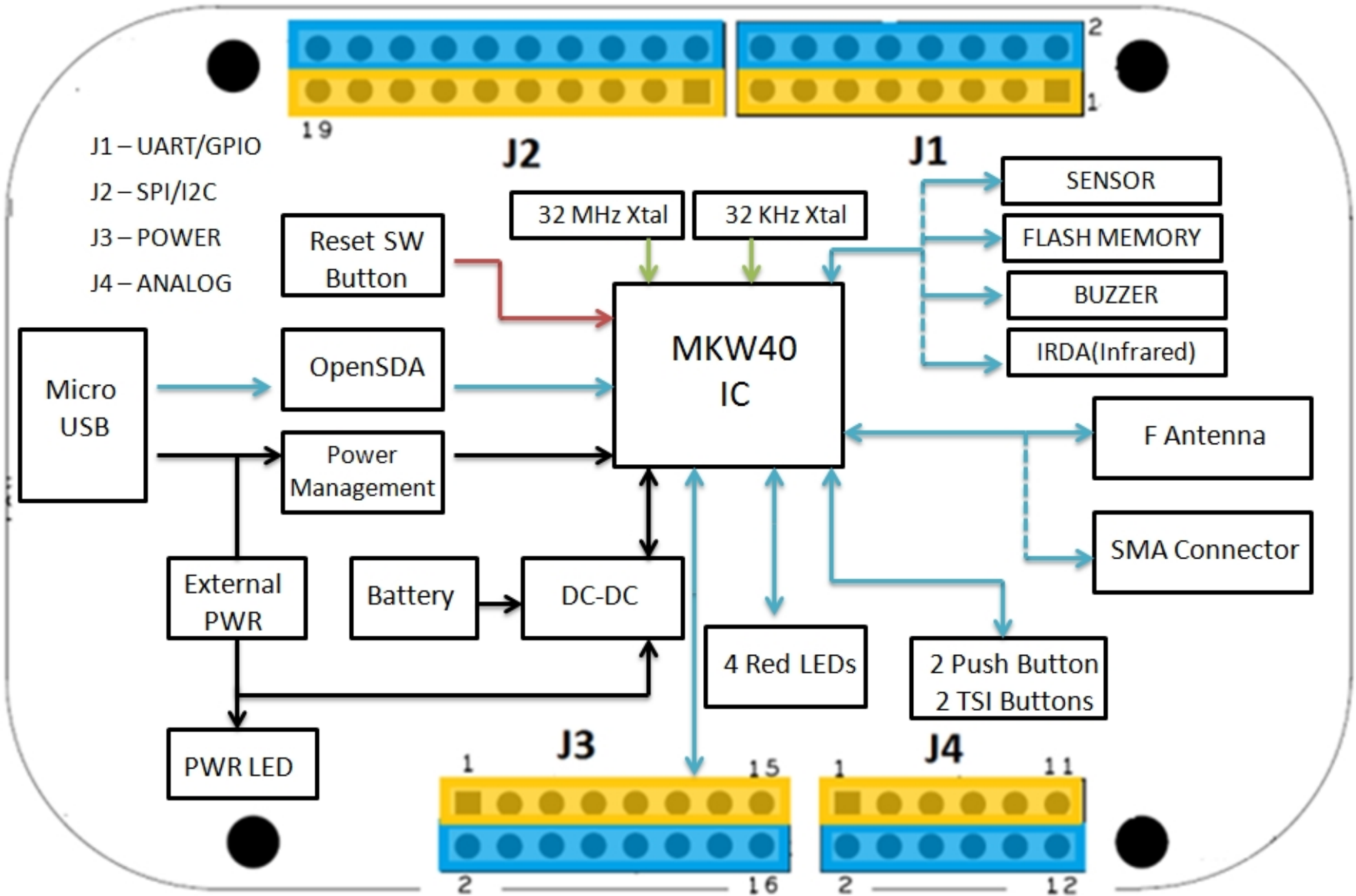
1
1. Unless Otherwise Specified:
All resistors are in ohms, 5%, 1/8 Watt
All capacitors are in uF, 20%, 50V
All voltages are DC
All polarized capacitors are aluminum electrolytic

2. Interrupted lines coded with the same letter or letter combinations are electrically connected.

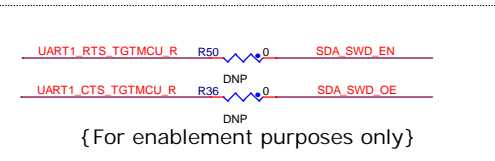
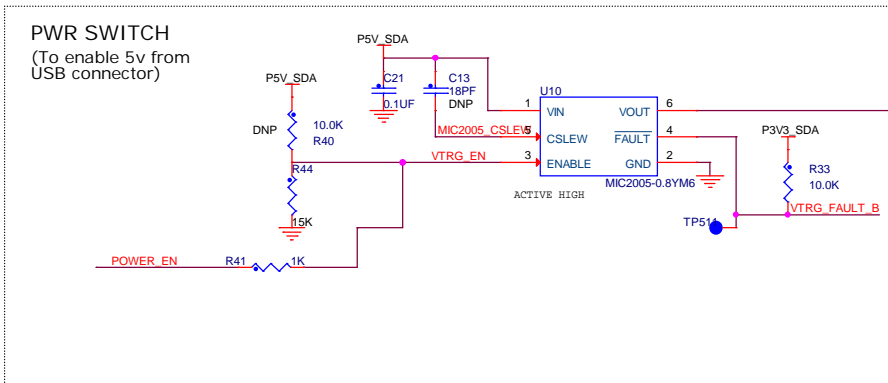
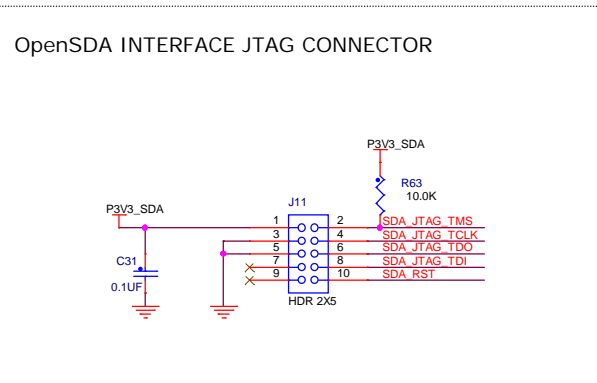
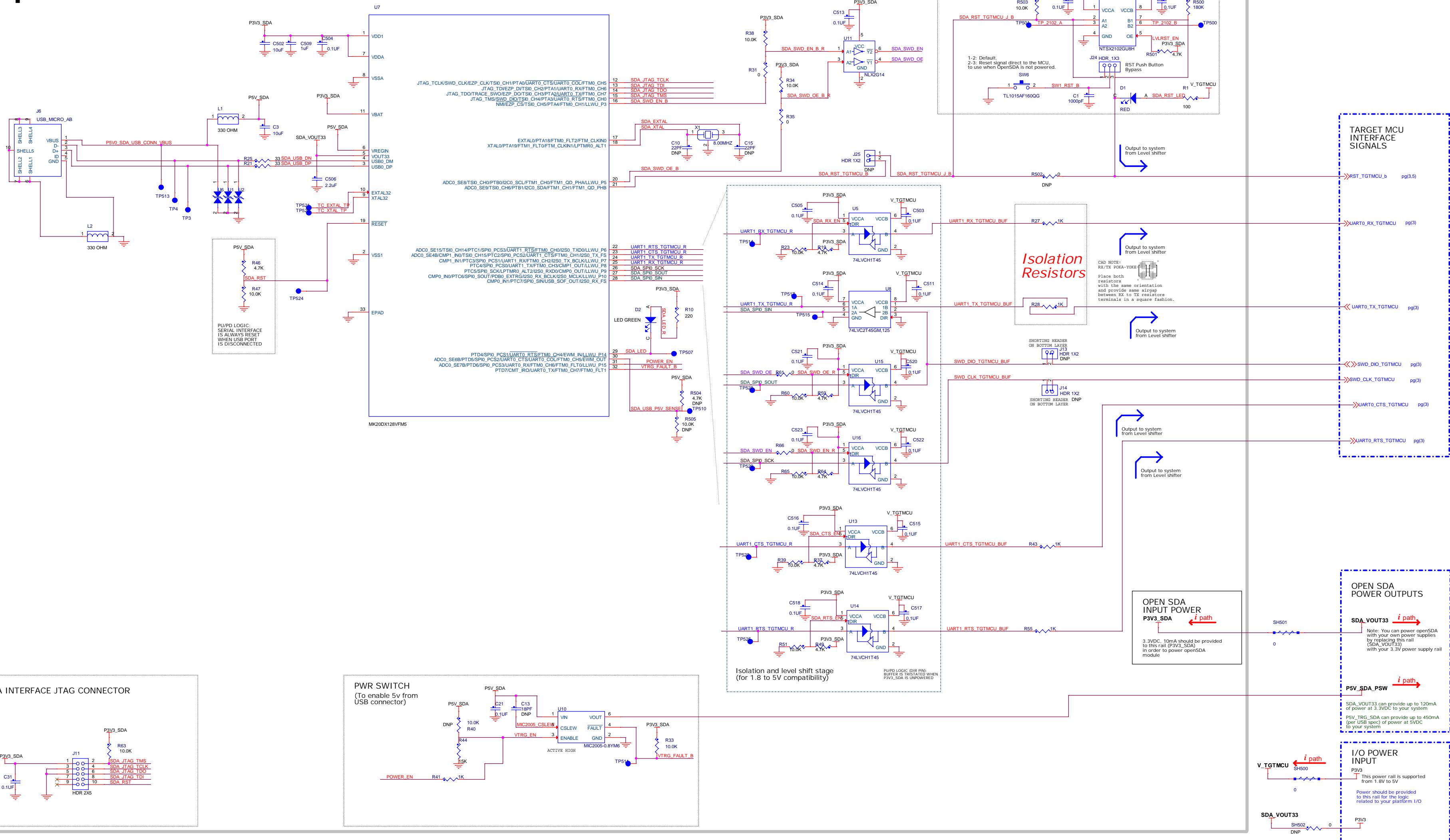
3. Device type number is for reference only. The number varies with the manufacturer.

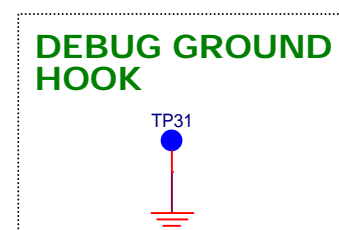
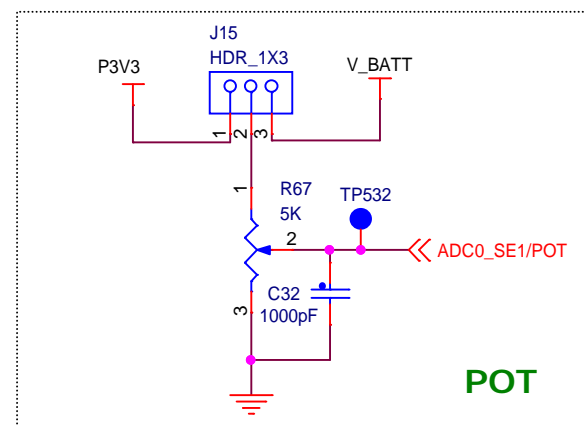
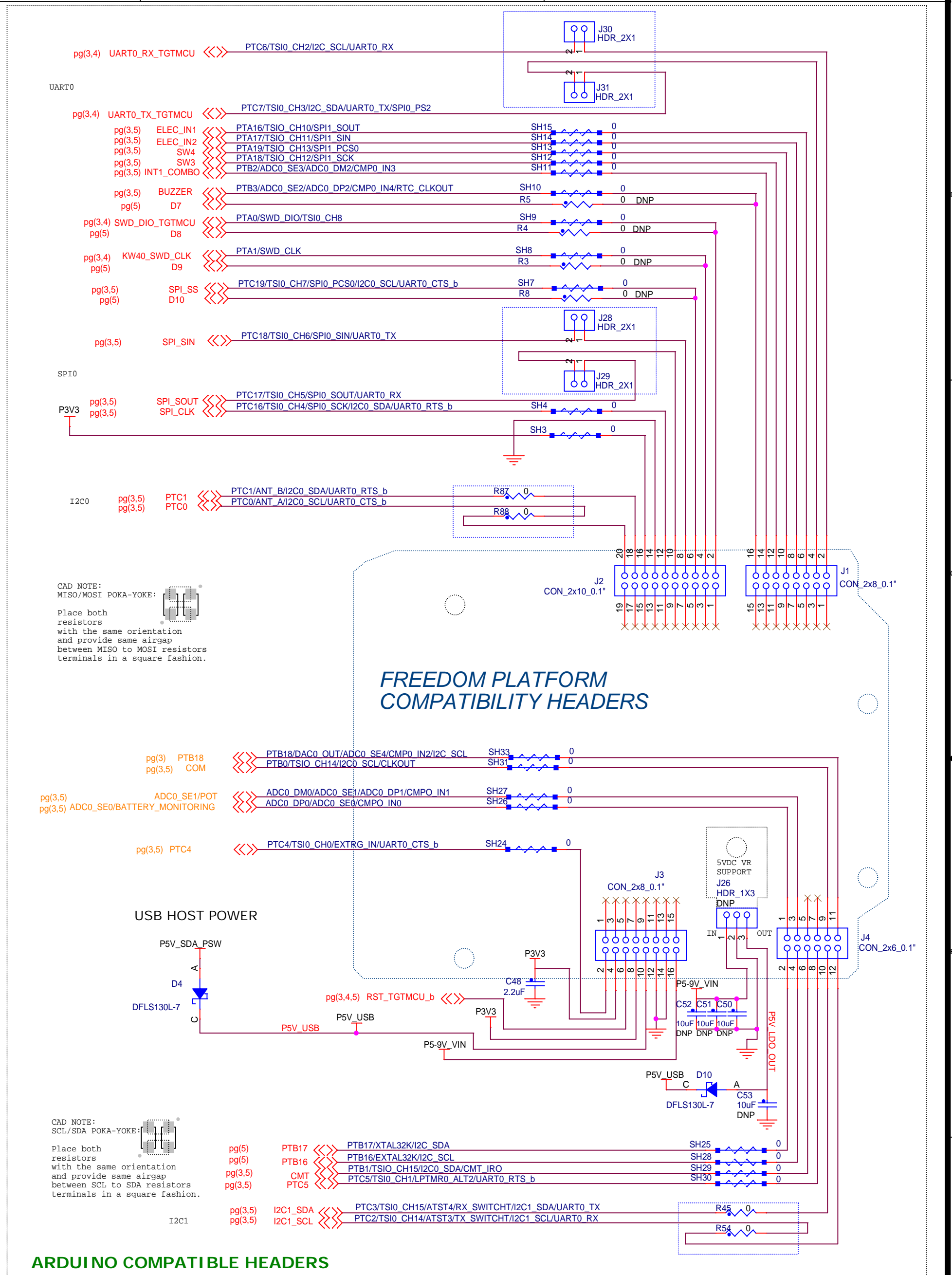
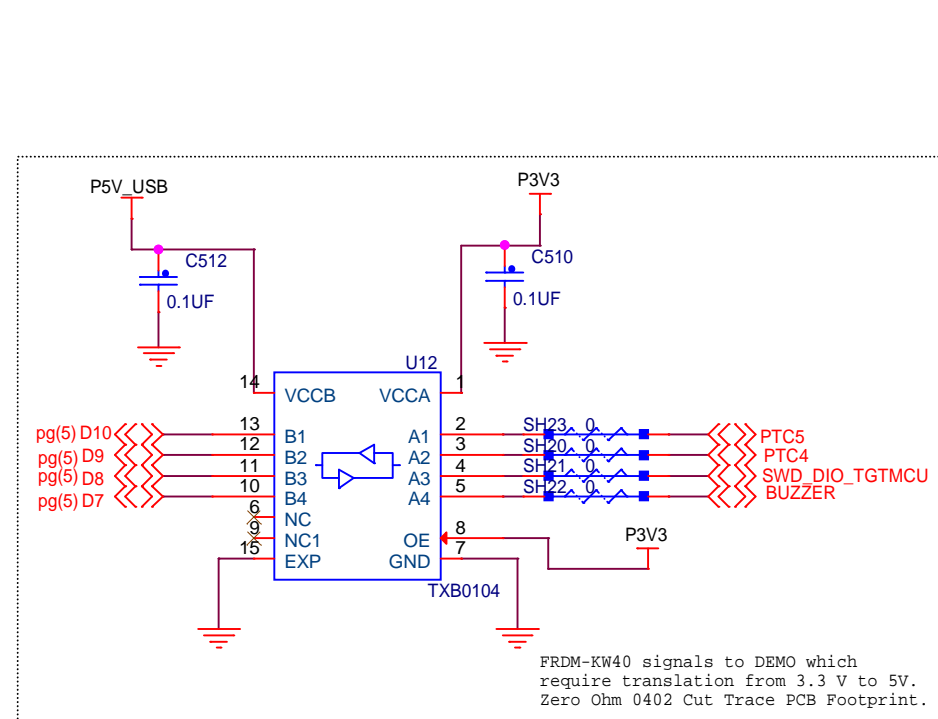
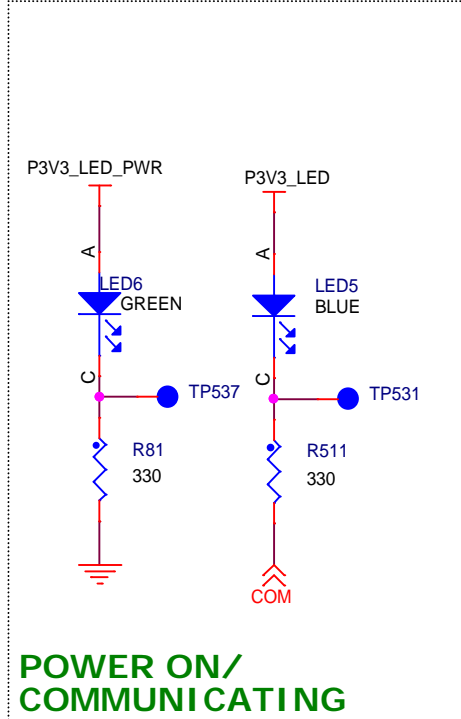
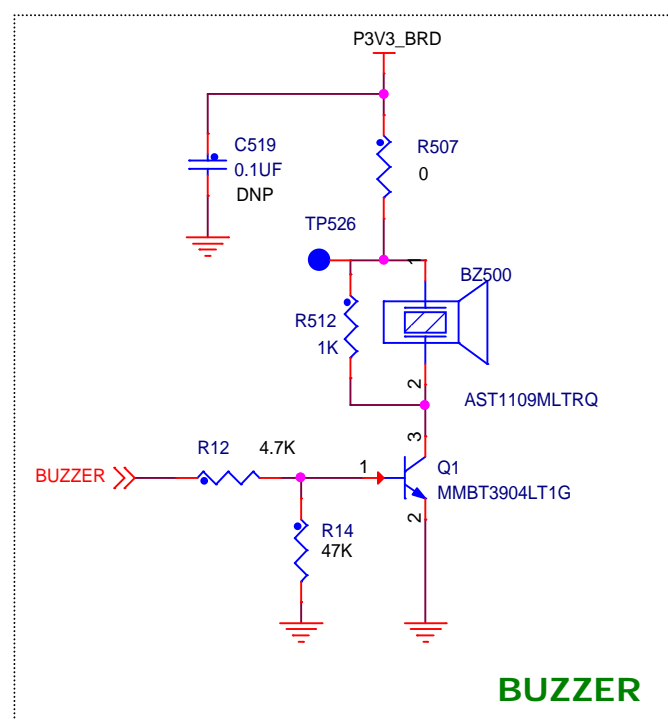
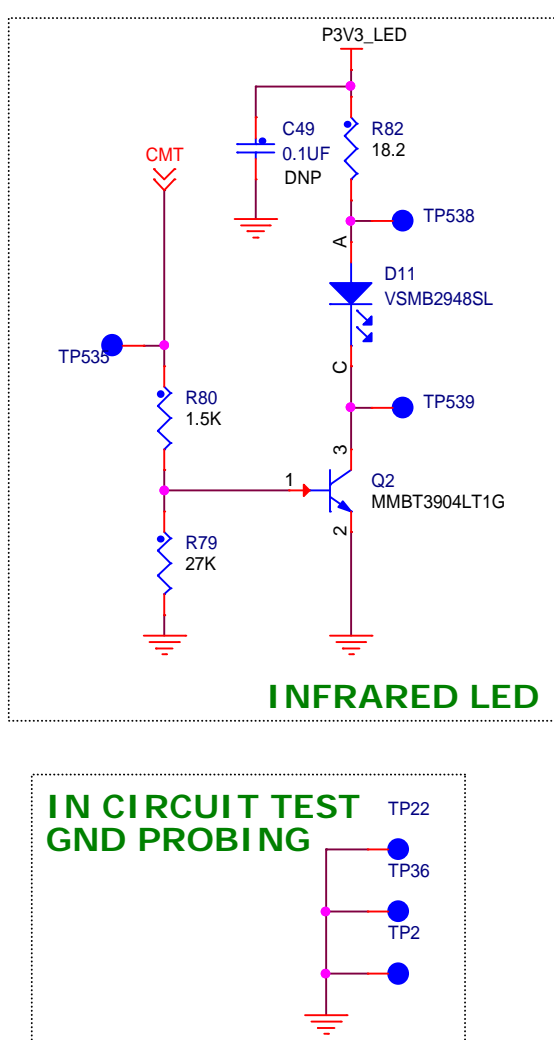
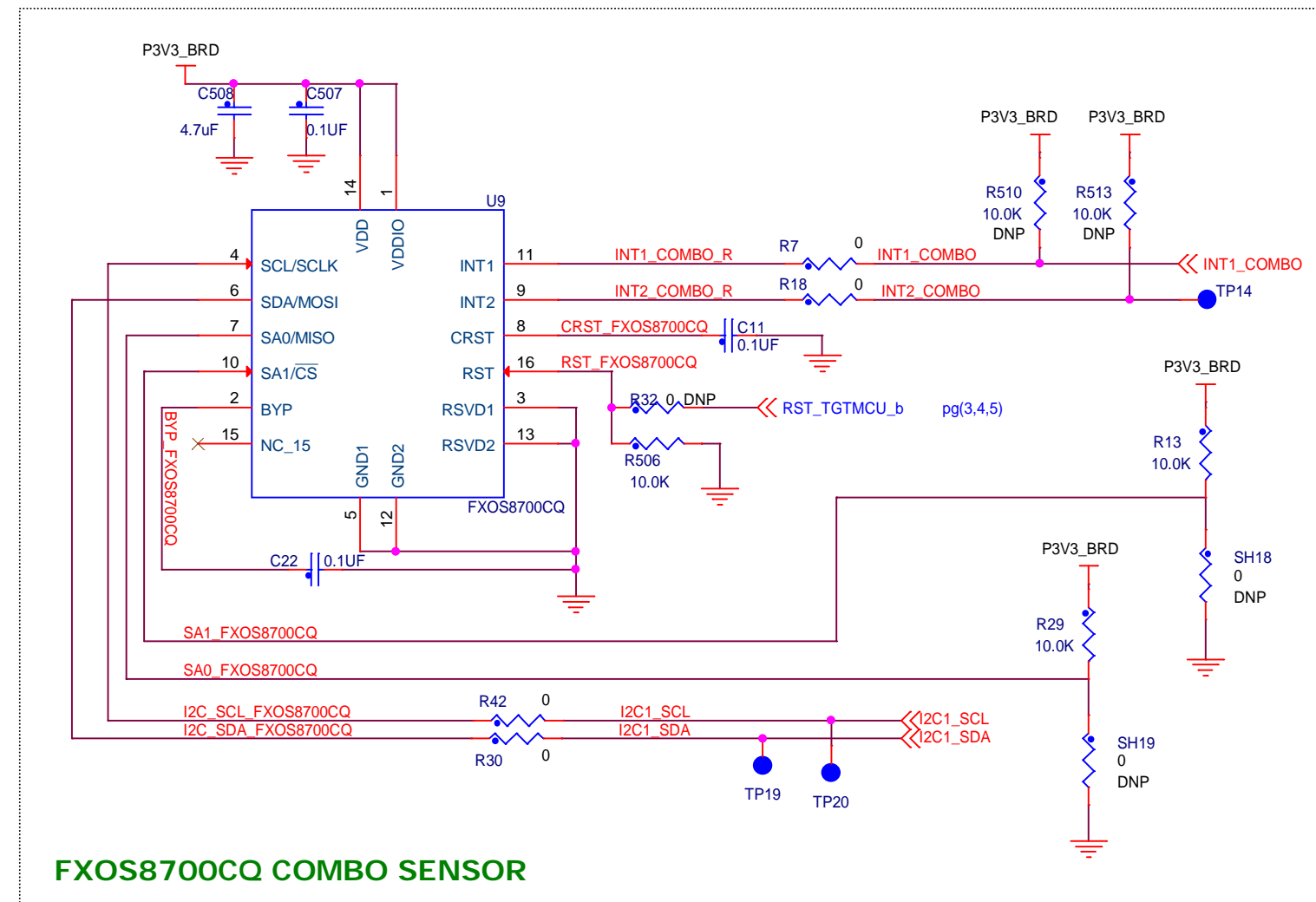
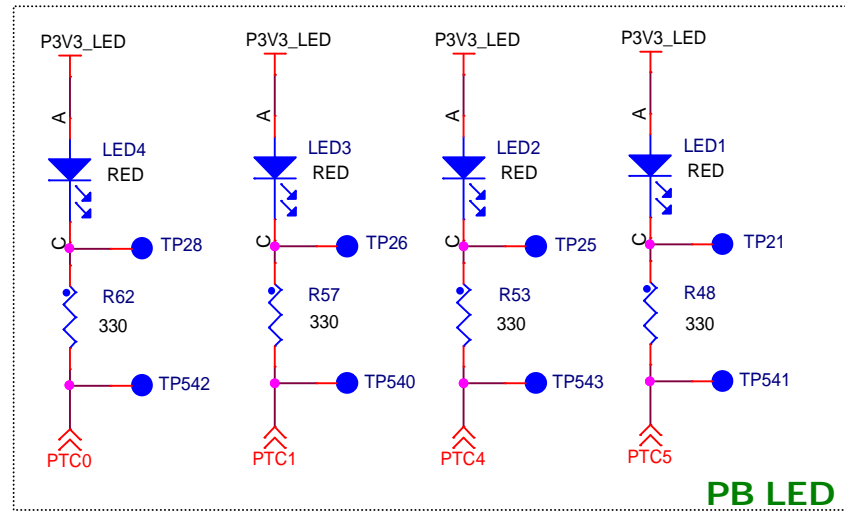
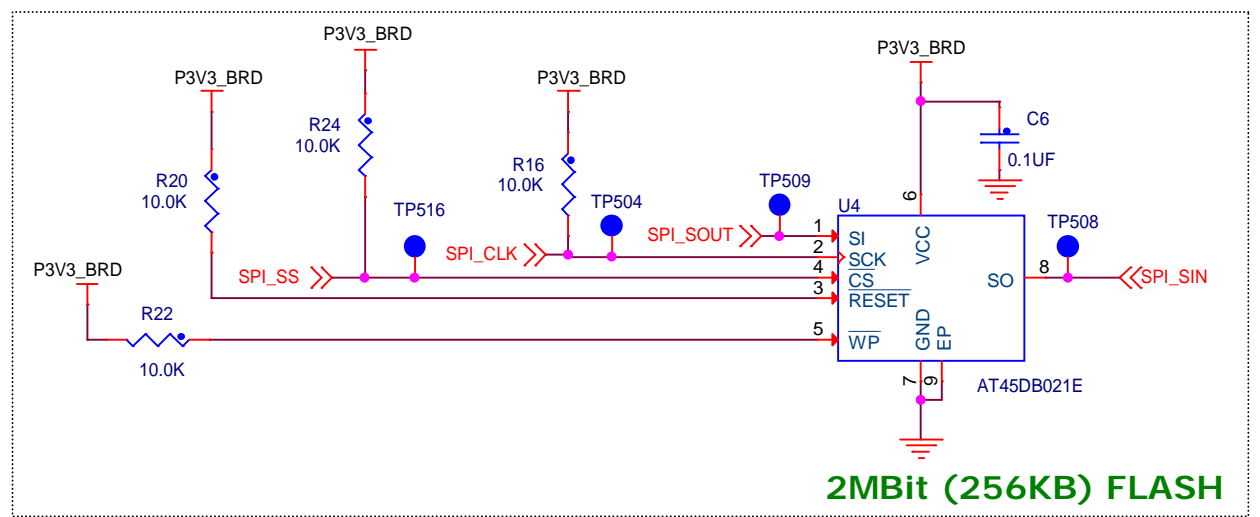
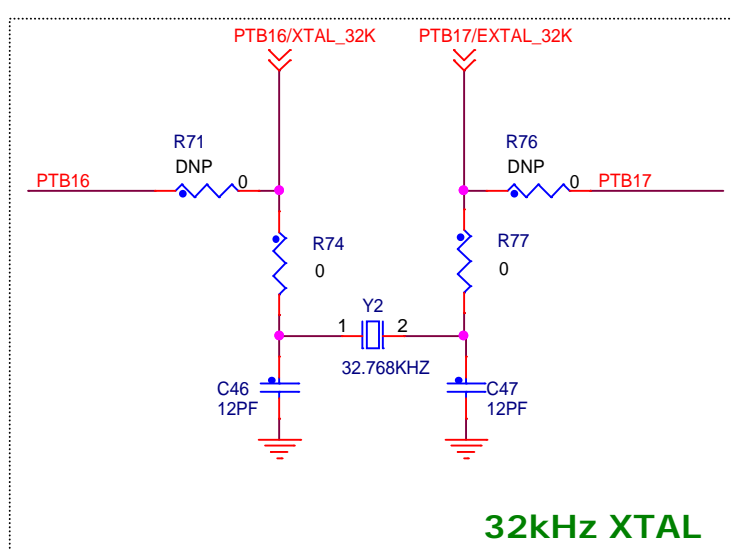
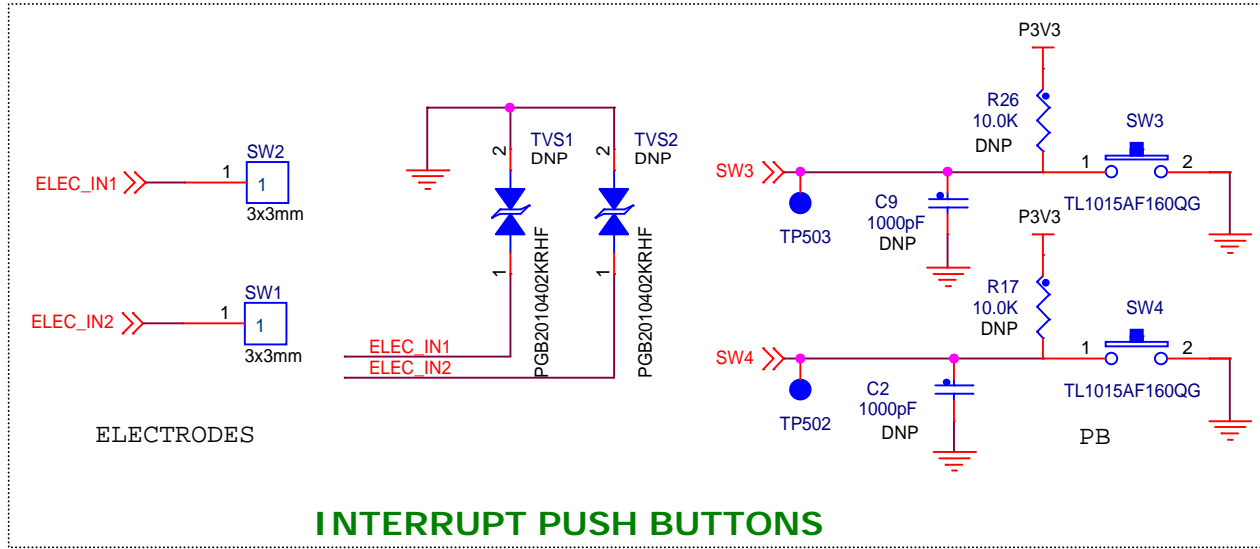
4. Special signal usage:
_B Denotes - Active-Low Signal
<> or [] Denotes - Vectored Signals

5. Interpret diagram in accordance with American National Standards Institute specifications, current revision, with the exception of logic block symbology.



OpenSDA Interface





ICAP Classification: FCP: FIUC: PUBI: X			
Drawing Title: X-FRDM-KW40Z			
Page Title: ARDUINO SHIELDS & PERIPHERALS			
Size C	Document Number	SCH-28379 PDF: SPF-28379	Rev C
Date:	Thursday, July 30, 2015	Sheet	5 of 5